

GFM600/2Volt 600Ah

General Series Battery

2V series is a general purpose battery with 20 years design life in float service. With heavy duty grids, thicker plates, special additives and updated AGM valve regulated technology, the RL series battery provides consistent performance and long service life. The new grid design effectively reduces the internal resistance, which provides higher specific energy density and excellent high rate discharge characteristics.

Application

- ☆Emergency Power System
- ☆Power tools
- ☆Communication equipment
- ☆Alarm system
- ☆Telecommunication systems
- ☆Marine equipment
- ☆Uninterruptible power supplies
- ☆Medical equipment
- ☆Electric toy car and wheelchairs, etc
- ☆Fire and Security System

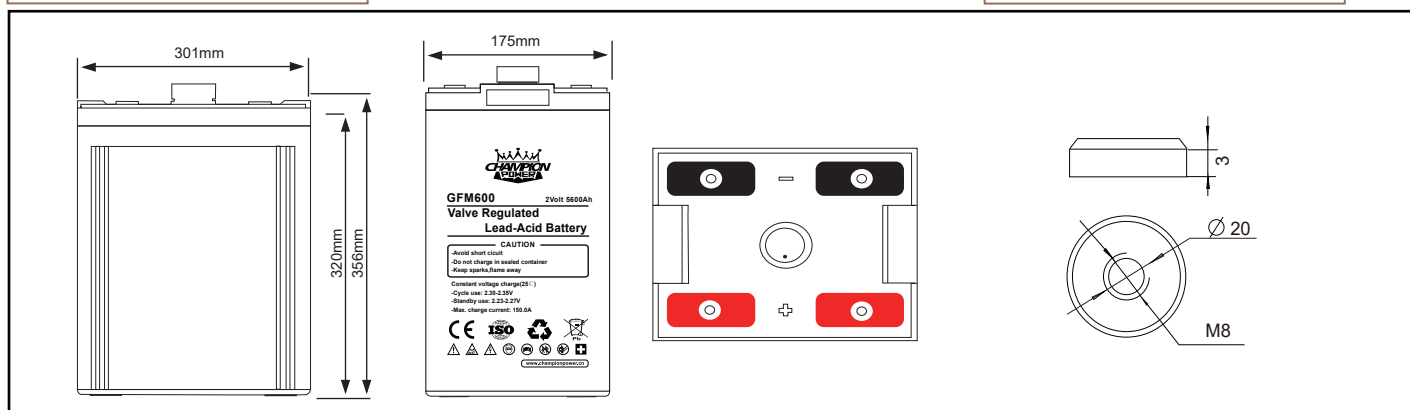


Specification

Battery Model	Nominal Voltage		2V	
	Rated capacity (10Hour rate)		600Ah	
Dimension	Length	Width	Height	Total Height
	301mm	175mm	330mm	356mm
Approx Weight	33.00Kg			
Internal Resistance	Full charged at 25°C (77°F): Approx 0.45mΩ			
Max.discharge current	3600A(5s)			
Floating design life @ 25°C (77°F)	20 years			
Capacity @ 25°C (77°F)	C ₂₀ (32.10A/1.85V)	C ₂₄ (27.50A/1.85V)	C ₄₈ (15.00A/1.85V)	C ₇₂ (10.42A/1.85V)
	642Ah	660Ah	720Ah	750Ah
Capacity affected by Temp(10 HR)	40°C (104°F)	25°C (77°F)	0°C (32°F)	-15°C (5°F)
	102%	100%	85%	65%
Self Discharge @ 25°C (77°F)	After 3 months storage		After 6 months storage	
	91%		82%	
Charge method @ 25°C (77°F)	After 12 months storage		64%	
	Cycle Use	2.30-2.35V (Initial charging current less than 150.0A)		
	Float Use	2.23-2.27V		

Outer dimension (mm)

Terminal Type (mm)



Constant Current(Amp) and Constant Power(Watt) Discharge Table at 25°C (77°F)

F.V / TIME		5min	10min	15min	30min	1h	2h	3h	4h	5h	8h	10h
1.60V	A	1860.00	1410.00	1050.00	690.00	360.00	210.00	156.00	124.00	105.25	69.50	66.00
	W	3286.00	2495.70	1872.50	1242.00	654.00	381.50	286.00	227.33	192.96	128.57	122.10
1.70V	A	1620.00	1325.00	965.00	655.00	372.00	201.50	153.00	120.00	103.25	68.40	63.00
	W	2943.00	2451.25	1793.29	1228.13	697.50	379.49	288.15	227.00	195.31	129.39	119.18
1.75V	A	1836.25	1266.00	900.00	635.00	360.00	197.50	150.00	114.00	102.00	67.50	61.80
	W	3366.46	2373.75	1695.00	1206.50	684.00	376.90	286.25	218.50	195.50	129.38	118.45
1.80V	A	1672.00	1210.00	840.00	606.00	348.00	192.50	147.00	112.00	97.50	65.75	60.00
	W	3065.33	2299.00	1603.00	1166.55	669.90	370.56	284.20	217.47	189.31	127.66	116.50
1.85V	A	1446.00	1140.00	780.00	564.00	330.00	187.50	141.00	110.00	93.25	64.00	58.50
	W	2723.30	2194.50	1508.00	1099.80	643.50	365.63	276.13	216.33	183.39	125.87	115.05

