



6FM90G/12Volt 90Ah

⚡ Gel Series Battery

Gel series is specially designed for power supply under extreme weather condition. It can be designed with AGM or PVC separator, by using strong grids, high purity lead and patented Gel electrolyte, With 15-year design life, it has rapid charging acceptance and floating or cyclic endurance.

⚡ Application

- ☆ Emergency Power System
- ☆ Communication equipment
- ☆ Telecommunication systems
- ☆ Uninterruptible power supplies
- ☆ Electric toy car and wheelchairs, etc
- ☆ Power tools
- ☆ Alarm system
- ☆ Marine equipment
- ☆ Medical equipment
- ☆ Fire and Security System



⚡ General Features

- ☆ Heavy Duty Grid
- ☆ Mechanized assembly
- ☆ Non-spillable construction
- ☆ High Reliability and Stability
- ☆ Sealed and Maintenance-free
- ☆ Long Life and low self-discharge design

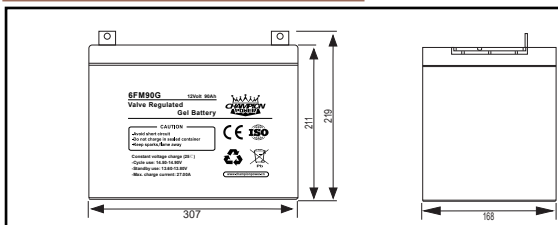
⚡ Construction

- ☆ Positive.....Lead dioxide
- ☆ Electrolyte.....Sulfuric acid
- ☆ Separator.....AGM or PVC
- ☆ Container.....ABS(UL94-HB) / Flame Retardant ABS (UL94-V0)
- ☆ Negative.....Lead
- ☆ Safety Valve.....EPDR
- ☆ Terminal.....Copper

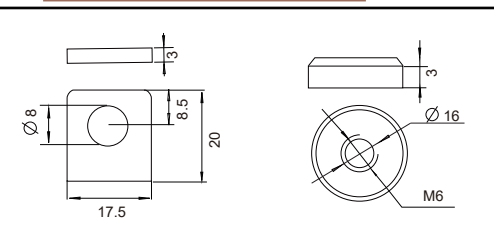
⚡ Specification

Battery Model	Nominal Voltage		12V	
	Rated capacity (10Hour rate)		90Ah	
	Cells Per battery		6	
Dimension	Length	Width	Height	Total Height
	307mm	169mm	213mm	220mm
Approx Weight	24.50Kg			
Internal Resistance	Full charged at 25°C(77°F): Approx 5mΩ			
Max.discharge current	720A(5s)			
Floating design life @ 25°C (77°F)	15 years			
Capacity @ 25°C (77°F)	10Hour rate(9.00A/10.8V)	5Hour rate(15.30A/10.5V)	3Hour rate(22.50A/10.5V)	1Hour rate(49.50A/10.5V)
	90Ah	69Ah	54Ah	35Ah
Capacity affected by Temp(10 HR)	40°C (104°F)	25°C (77°F)	0°C (32°F)	-15°C(5°F)
	102%	100%	85%	65%
Self Discharge @ 25°C (77°F)	After 3 months storage		After 12 months storage	
	93%	84%	65%	
Charge method @ 25°C (77°F)	Cycle Use	14.50-14.90V (Initial charging current less than 27.00A)		
	Float Use	13.60-13.80V		

⚡ Outer dimension (mm)



⚡ Terminal Type (mm)



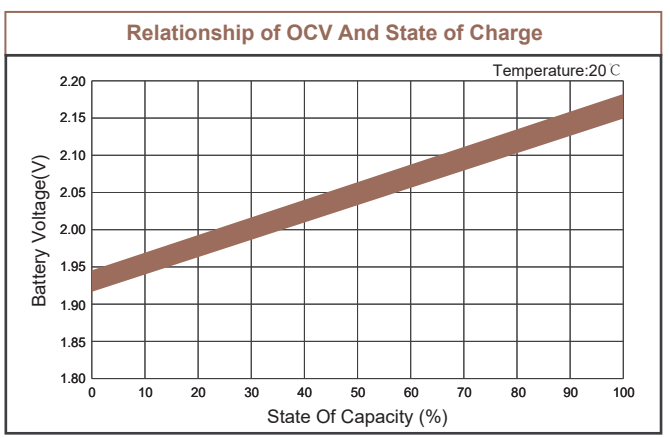
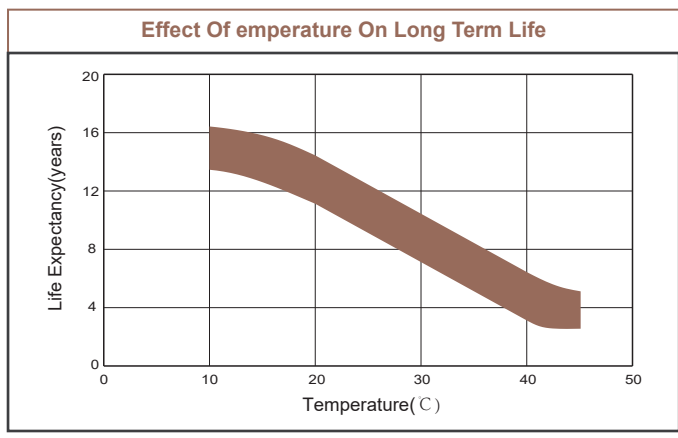
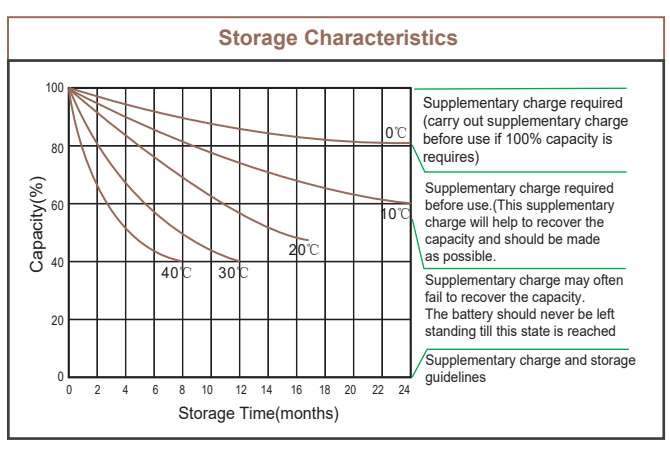
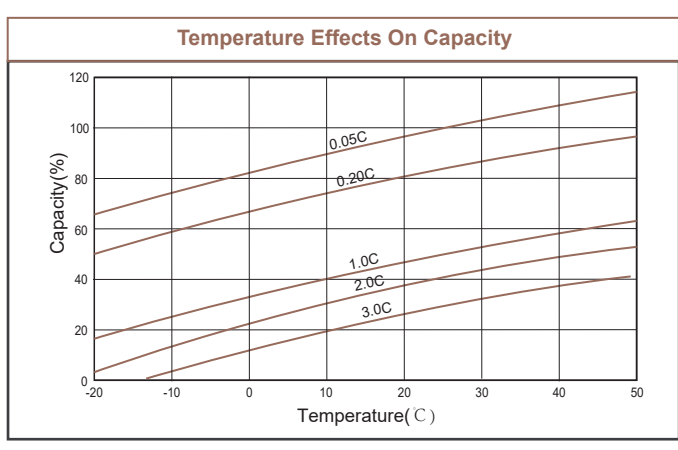
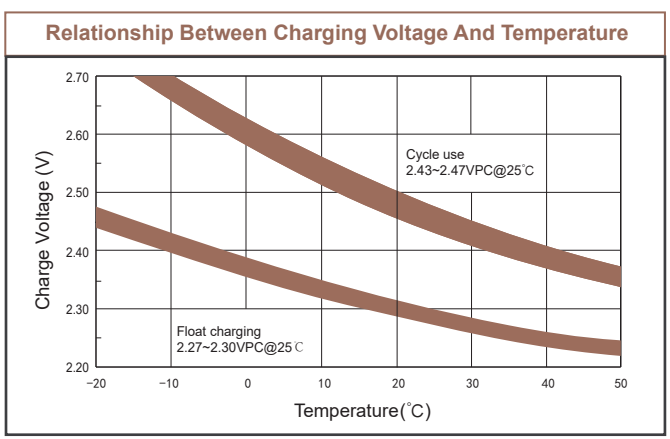
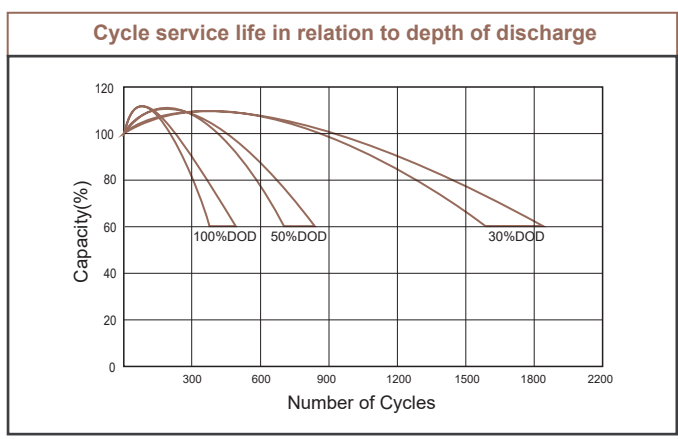
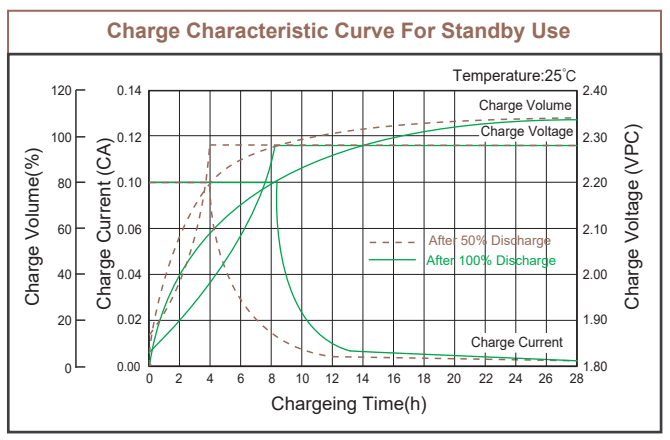
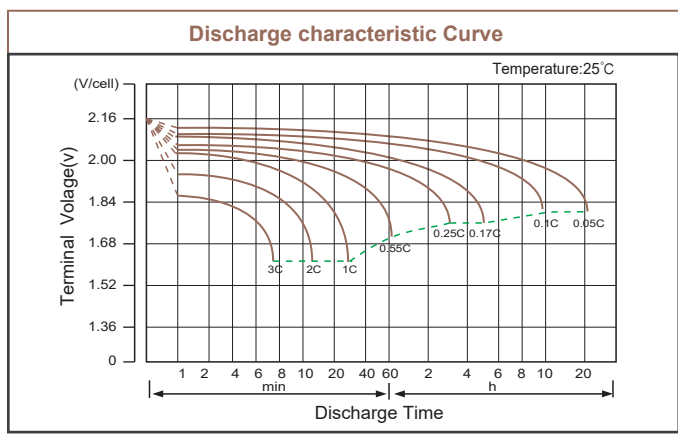
⚡ Constant Current(Amp) and Constant Power(Watt) Discharge Table at 25°C (77°F)

F.V / TIME		5min	10min	15min	30min	1h	2h	3h	4h	5h	8h	10h	20h
9.60V	A	324.00	198.00	157.50	103.50	54.45	31.50	23.40	18.90	15.79	10.42	9.90	5.13
	W	3434.40	2102.76	1685.25	1117.80	593.51	343.35	257.40	207.90	173.66	115.72	109.89	57.71
10.20V	A	297.00	189.90	144.75	98.25	54.00	30.22	22.95	18.00	15.49	10.26	9.45	5.04
	W	3237.30	2107.89	1613.96	1105.31	607.50	341.54	259.34	204.30	175.78	116.45	107.26	57.20
10.50V	A	275.44	181.49	135.00	95.25	52.20	29.63	22.50	17.10	15.30	10.13	9.27	4.98
	W	3029.81	2041.81	1525.50	1085.85	595.08	339.21	257.63	196.65	175.95	116.44	106.61	57.24
10.80V	A	250.80	179.93	126.00	90.90	51.30	28.87	22.05	16.80	14.63	9.86	9.00	4.91
	W	2758.80	2051.18	1442.70	1049.90	592.52	333.51	255.78	195.72	170.38	114.90	104.85	57.25
11.10V	A	216.90	171.00	117.00	84.60	49.50	28.13	21.15	16.50	13.99	9.60	8.78	4.86
	W	2450.97	1975.05	1357.20	989.82	579.15	329.06	248.51	194.70	165.05	113.28	103.55	57.35

Note: The above datas are average values. (Edition 2017-11)



6FM90G/12Volt 90Ah



Note: The above datas are average values. (Edition 2017-11)