



## 6FM80D/12Volt 80Ah

### Deep Cycle Batteries

Deep cycle Series Battery is specially designed for frequent cycling applications. The series battery uses high-tin alloy positive plate, active paste materials and stronger electrolyte, which gives 30% longer life than normal battery. Suitable for solar and wind energy systems.



### Application

- ☆ Emergency Power System
- ☆ Communication equipment
- ☆ Telecommunication systems
- ☆ Uninterruptible power supplies
- ☆ Electric toy car and wheelchairs, etc
- ☆ Power tools
- ☆ Alarm system
- ☆ Marine equipment
- ☆ Medical equipment
- ☆ Fire and Security System

### General Features

- ☆ Heavy Duty Grid
- ☆ Mechanized assembly
- ☆ Non-spillable construction
- ☆ High Reliability and Stability
- ☆ Sealed and Maintenance-free
- ☆ Long Life and low self-discharge design

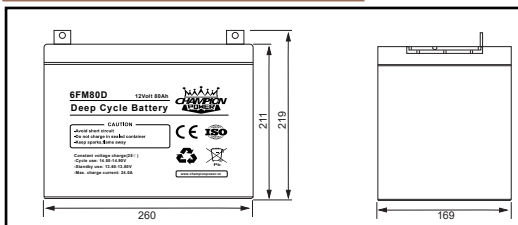
### Construction

- ☆ Positive.....Lead dioxide
- ☆ Electrolyte.....Colloidal Sulfuric acid
- ☆ Separator.....Fiber glass
- ☆ Container.....ABS(UL94-HB) / Flame Retardant ABS (UL94-V0)
- ☆ Negative.....Lead
- ☆ Safety Valve.....EPDR
- ☆ Terminal.....Copper

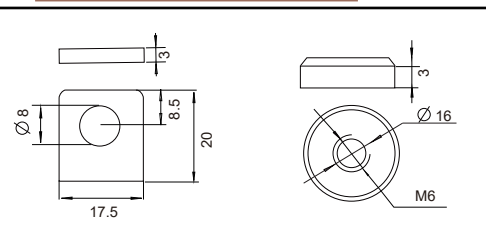
### Specification

Battery Model	Nominal Voltage		12V	
	Rated capacity (10Hour rate)		80Ah	
	Cells Per battery		6	
Dimension	Length	Width	Height	Total Height
	260mm	169mm	210mm	216mm
Approx Weight	21.70Kg			
Internal Resistance	Full charged at 25°C (77°F): Approx 5.0mΩ			
Max. discharge current	640A(5s)			
Floating design life @ 25°C (77°F)	15 years			
Capacity @ 25°C (77°F)	10Hour rate(8A/10.8V)	5Hour rate(13.6A/10.5V)	3Hour rate(20A/10.5V)	1Hour rate(44A/10.5V)
	80Ah	61Ah	48Ah	31Ah
Capacity affected by Temp(10 HR)	40°C (104°F)	25°C (77°F)	0°C (32°F)	-15°C (5°F)
	102%	100%	85%	65%
Self Discharge @ 25°C (77°F)	After 3 months storage	After 6 months storage	After 12 months storage	
	93%	84%	65%	
Charge method @ 25°C (77°F)	Cycle Use	14.50-14.90V (Initial charging current less than 24.0A)		
	Float Use	13.60-13.80V		

### Outer dimension (mm)



### Terminal Type (mm)



### Constant Current(Amp) and Constant Power(Watt) Discharge Table at 25°C (77°F)

F.V / TIME		5min	10min	15min	30min	1h	2h	3h	4h	5h	8h	10h	20h
9.60V	A	288.00	176.00	140.00	92.00	48.40	28.00	20.80	16.80	14.03	9.27	8.80	4.56
	W	3052.80	1869.12	1498.00	993.60	527.56	305.20	228.80	184.80	154.37	102.86	97.68	51.30
10.20V	A	264.00	168.80	128.67	87.33	48.00	26.87	20.40	16.00	13.77	9.12	8.40	4.48
	W	2877.60	1873.68	1434.63	982.50	540.00	303.59	230.52	181.60	156.25	103.51	95.34	50.85
10.50V	A	244.83	161.33	120.00	84.67	46.40	26.33	20.00	15.20	13.60	9.00	8.24	4.42
	W	2693.17	1814.94	1356.00	965.20	528.96	301.52	229.00	174.80	156.40	103.50	94.76	50.88
10.80V	A	222.93	159.94	112.00	80.80	45.60	25.67	19.60	14.93	13.00	8.77	8.00	4.37
	W	2452.27	1823.27	1282.40	933.24	526.68	296.45	227.36	173.97	151.45	102.13	93.20	50.89
11.10V	A	192.80	152.00	104.00	75.20	44.00	25.00	18.80	14.67	12.43	8.53	7.80	4.32
	W	2178.64	1755.60	1206.40	879.84	514.80	292.50	220.90	173.07	146.71	100.69	92.04	50.98

Note: The above datas are average values. (Edition 2017-11)



## 6FM80D/12Volt 80Ah

