



Deep Cycle Batteries

6FM70D/12Volt 70Ah

Deep cycle Series Battery is specially designed for frequent cycling applications. The series battery uses high-tin alloy positive plate, active paste materials and stronger electrolyte, which gives 30% longer life than normal battery. Suitable for solar and wind energy systems.



Application

- ☆ Emergency Power System
- ☆ Communication equipment
- ☆ Telecommunication systems
- ☆ Uninterruptible power supplies
- ☆ Electric toy car and wheelchairs, etc
- ☆ Power tools
- ☆ Alarm system
- ☆ Marine equipment
- ☆ Medical equipment
- ☆ Fire and Security System

General Features

- ☆ Heavy Duty Grid
- ☆ Mechanized assembly
- ☆ Non-spillable construction
- ☆ High Reliability and Stability
- ☆ Sealed and Maintenance-free
- ☆ Long Life and low self-discharge design

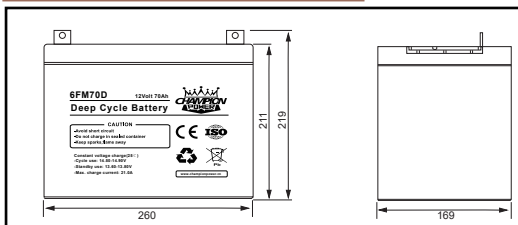
Construction

- ☆ Positive.....Lead dioxide
- ☆ Electrolyte.....Colloidal Sulfuric acid
- ☆ Separator.....Fiber glass
- ☆ Container.....ABS(UL94-HB) / Flame Retardant ABS (UL94-V0)
- ☆ Negative.....Lead
- ☆ Safety Valve.....EPDR
- ☆ Terminal.....Copper

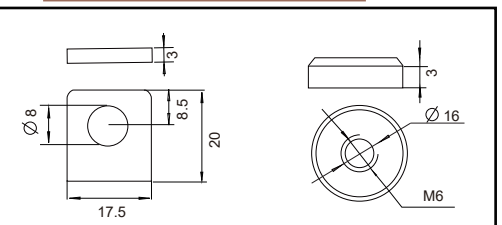
Specification

Battery Model	Nominal Voltage		12V	
	Rated capacity (10Hour rate)		70Ah	
	Cells Per battery		6	
Dimension	Length	Width	Height	Total Height
	260mm	169mm	210mm	216mm
Approx Weight	20.50Kg			
Internal Resistance	Full charged at 25°C (77°F): Approx 5.5mΩ			
Max. discharge current	560A(5s)			
Floating design life @ 25°C (77°F)	15 years			
Capacity @ 25°C (77°F)	10Hour rate(7A/10.8V)	5Hour rate(11.9A/10.5V)	3Hour rate(17.5A/10.5V)	1Hour rate(38.5A/10.5V)
	70Ah	54Ah	42Ah	27Ah
Capacity affected by Temp(10 HR)	40°C (104°F)	25°C (77°F)	0°C (32°F)	-15°C (5°F)
	102%	100%	85%	65%
Self Discharge @ 25°C (77°F)	After 3 months storage	After 6 months storage	After 12 months storage	
	93%	84%	65%	
Charge method @ 25°C (77°F)	Cycle Use	14.50-14.90V (Initial charging current less than 21.0A)		
	Float Use	13.60-13.80V		

Outer dimension (mm)



Terminal Type (mm)



Constant Current(Amp) and Constant Power(Watt) Discharge Table at 25°C (77°F)

F.V / TIME		5min	10min	15min	30min	1h	2h	3h	4h	5h	8h	10h	20h
9.60V	A	252.00	154.00	122.50	80.50	42.35	24.50	18.20	14.70	12.28	8.11	7.70	3.99
	W	2671.20	1635.48	1310.75	869.40	461.62	267.05	200.20	161.70	135.07	90.00	85.47	44.89
10.20V	A	231.00	147.70	112.58	76.42	42.00	23.51	17.85	14.00	12.05	7.98	7.35	3.92
	W	2517.90	1639.47	1255.30	859.69	472.50	265.64	201.71	158.90	136.72	90.57	83.42	44.49
10.50V	A	214.23	141.16	105.00	74.08	40.60	23.04	17.50	13.30	11.90	7.88	7.21	3.87
	W	2356.52	1588.07	1186.50	844.55	462.84	263.83	200.38	152.95	136.85	90.56	82.92	44.52
10.80V	A	195.07	139.94	98.00	70.70	39.90	22.46	17.15	13.07	11.38	7.67	7.00	3.82
	W	2145.73	1595.36	1122.10	816.59	460.85	259.39	198.94	152.23	132.52	89.36	81.55	44.53
11.10V	A	168.70	133.00	91.00	65.80	38.50	21.88	16.45	12.83	10.88	7.47	6.83	3.78
	W	1906.31	1536.15	1055.60	769.86	450.45	255.94	193.29	151.43	128.37	88.11	80.54	44.60



6FM70D/12VoIt 70Ah

