



## ⚡ Gel Series Battery

Gel series is specially designed for power supply under extreme weather condition. It can be designed with AGM or PVC separator, by using strong grids, high purity lead and patented Gel electrolyte, With 15-year design life, it has rapid charging acceptance and floating or cyclic endurance.

## 6FM250G/12Volt 250Ah



## ⚡ Application

- ☆ Emergency Power System
- ☆ Communication equipment
- ☆ Telecommunication systems
- ☆ Uninterruptible power supplies
- ☆ Electric toy car and wheelchairs, etc
- ☆ Power tools
- ☆ Alarm system
- ☆ Marine equipment
- ☆ Medical equipment
- ☆ Fire and Security System

## ⚡ General Features

- ☆ Heavy Duty Grid
- ☆ Mechanized assembly
- ☆ Non-spillable construction
- ☆ High Reliability and Stability
- ☆ Sealed and Maintenance-free
- ☆ Long Life and low self-discharge design

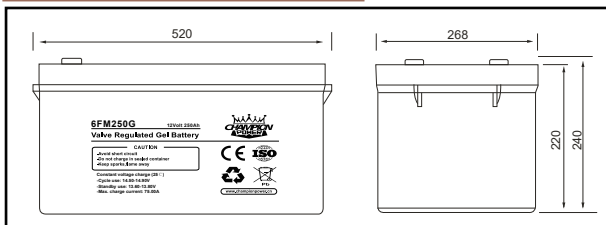
## ⚡ Construction

- ☆ Positive.....Lead dioxide
- ☆ Electrolyte.....Sulfuric acid
- ☆ Separator.....AGM or PVC
- ☆ Container.....ABS(UL94-HB) / Flame Retardant ABS (UL94-V0)
- ☆ Negative.....Lead
- ☆ Safety Valve.....EPDR
- ☆ Terminal.....Copper

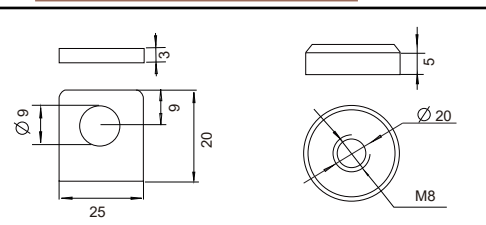
## ⚡ Specification

|                                    |   |  |                          |                           |
|------------------------------------|---|--|--------------------------|---------------------------|
| Battery Model                      | Nominal Voltage                           |  | 12V                      |                           |
|                                    | Rated capacity (10Hour rate)              |  | 250Ah                    |                           |
|                                    | Cells Per battery                         |  | 6                        |                           |
| Dimension                          | Length                                    | Width  | Height                   | Total Height              |
|                                    | 520mm                                     | 260mm  | 220mm                    | 240mm                     |
| Approx Weight                      | 64.50Kg                                   |  |                          |                           |
| Internal Resistance                | Full charged at 25°C (77°F): Approx 2.5mΩ |  |                          |                           |
| Max. discharge current             | 2000A(5s)                                 |  |                          |                           |
| Floating design life @ 25°C (77°F) | 15 years                                  |  |                          |                           |
| Capacity @ 25°C (77°F)             | 10Hour rate(25.00A/10.8V)                 | 5Hour rate(42.50A/10.5V)                                 | 3Hour rate(62.50A/10.5V) | 1Hour rate(137.50A/10.5V) |
|                                    | 250Ah                                     | 191Ah  | 150Ah                    | 96Ah                      |
| Capacity affected by Temp(10 HR)   | 40°C (104°F)                              | 25°C (77°F)  | 0°C (32°F)               | -15°C (5°F)               |
|                                    | 102%                                      | 100%   | 85%                      | 65%                       |
| Self Discharge @ 25°C (77°F)       | After 3 months storage                    | After 6 months storage                                   | After 12 months storage  |                           |
|                                    | 93%                                       | 84%  | 65%                      |                           |
| Charge method @ 25°C (77°F)        | Cycle Use                                 | 14.50-14.90V (Initial charging current less than 75.00A) |                          |                           |
|                                    | Float Use                                 | 13.60-13.80V   |                          |                           |

## ⚡ Outer dimension (mm)



## ⚡ Terminal Type (mm)



## ⚡ Constant Current(Amp) and Constant Power(Watt) Discharge Table at 25°C (77°F)

| F.V / TIME |   | 5min    | 10min   | 15min   | 30min   | 1h      | 2h     | 3h     | 4h     | 5h     | 8h     | 10h    | 20h    |
|------------|---|---------|---------|---------|---------|---------|--------|--------|--------|--------|--------|--------|--------|
| 9.60V      | A | 900.00  | 550.00  | 437.50  | 287.50  | 151.25  | 87.50  | 65.00  | 52.50  | 43.85  | 28.96  | 27.50  | 14.25  |
|            | W | 9540.00 | 5841.00 | 4681.25 | 3105.00 | 1648.63 | 953.75 | 715.00 | 577.50 | 482.40 | 321.44 | 305.25 | 160.31 |
| 10.20V     | A | 825.00  | 527.50  | 402.08  | 272.92  | 150.00  | 83.96  | 63.75  | 50.00  | 43.02  | 28.50  | 26.25  | 14.00  |
|            | W | 8992.50 | 5855.25 | 4483.23 | 3070.31 | 1687.50 | 948.73 | 720.38 | 567.50 | 488.29 | 323.48 | 297.94 | 158.90 |
| 10.50V     | A | 765.10  | 504.15  | 375.00  | 264.58  | 145.00  | 82.29  | 62.50  | 47.50  | 42.50  | 28.13  | 25.75  | 13.83  |
|            | W | 8416.15 | 5671.69 | 4237.50 | 3016.24 | 1653.00 | 942.24 | 715.63 | 546.25 | 488.75 | 323.44 | 296.13 | 158.99 |
| 10.80V     | A | 696.67  | 499.80  | 350.00  | 252.50  | 142.50  | 80.21  | 61.25  | 46.67  | 40.63  | 27.40  | 25.00  | 13.65  |
|            | W | 7663.33 | 5697.72 | 4007.50 | 2916.38 | 1645.88 | 926.41 | 710.50 | 543.67 | 473.28 | 319.16 | 291.25 | 159.02 |
| 11.10V     | A | 602.50  | 475.00  | 325.00  | 235.00  | 137.50  | 78.13  | 58.75  | 45.83  | 38.85  | 26.67  | 24.38  | 13.50  |
|            | W | 6808.25 | 5486.25 | 3770.00 | 2749.50 | 1608.75 | 914.06 | 690.31 | 540.83 | 458.48 | 314.67 | 287.63 | 159.30 |



## 6FM250G/12VoIt 250Ah

