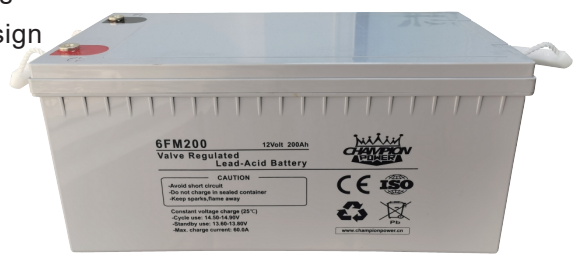




6FM200/12Volt 200Ah

General Series Battery

General Series VRLA batteries are designed with AGM(Absorbent Glass Mat) technology, High performance plates and electrolyte to give extra power output for common power backup system. General Series Batteries are the general purpose batteries with 10 years floating design life at 25 C.



Application

- ☆ Emergency Power System
- ☆ Communication equipment
- ☆ Telecommunication systems
- ☆ Uninterruptible power supplies
- ☆ Electric toy car and wheelchairs, etc
- ☆ Power tools
- ☆ Alarm system
- ☆ Marine equipment
- ☆ Medical equipment
- ☆ Fire and Security System

General Features

- ☆ Heavy Duty Grid
- ☆ Mechanized assembly
- ☆ Non-spillable construction
- ☆ High Reliability and Stability
- ☆ Sealed and Maintenance-free
- ☆ Long Life and low self-discharge design

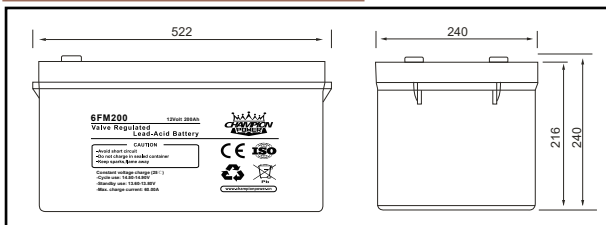
Construction

- ☆ Positive.....Lead dioxide
- ☆ Electrolyte.....Sulfuric acid
- ☆ Separator.....Fiber glass
- ☆ Container.....ABS(UL94-HB) / Flame Retardant ABS (UL94-V0)
- ☆ Negative.....Lead
- ☆ Safety Valve.....EPDR
- ☆ Terminal.....Copper

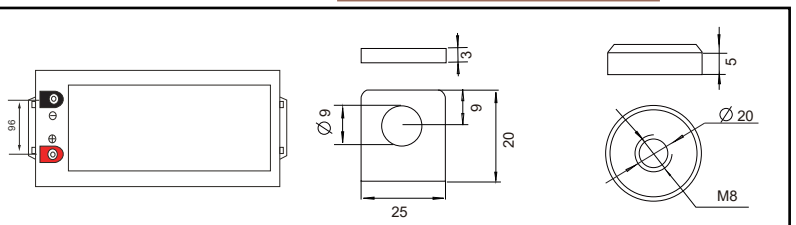
Specification

Battery Model	Nominal Voltage		12V	
	Rated capacity (10Hour rate)		200Ah	
	Cells Per battery		6	
Dimension	Length	Width	Height	Total Height
	522mm	240mm	216mm	240mm
Approx Weight	54.50Kg			
Internal Resistance	Full charged at 25°C (77°F): Approx 3.0mΩ			
Max. discharge current	1600A(5s)			
Floating design life @ 25°C (77°F)	10 years			
Capacity @ 25°C (77°F)	10Hour rate(20.00A/10.8V)	5Hour rate(34.00A/10.5V)	3Hour rate(50.00A/10.5V)	1Hour rate(110.00A/10.5V)
	200Ah	153Ah	120Ah	77Ah
Capacity affected by Temp(10 HR)	40°C (104°F)	25°C (77°F)	0°C (32°F)	-15°C (5°F)
	102%	100%	85%	65%
Self Discharge @ 25°C (77°F)	After 3 months storage		After 12 months storage	
	93%		65%	
Charge method @ 25°C (77°F)	Cycle Use	14.50-14.90V (Initial charging current less than 60.00A)		
	Float Use	13.60-13.80V		

Outer dimension (mm)



Terminal Type (mm)



Constant Current(Amp) and Constant Power(Watt) Discharge Table at 25°C (77°F)

F.V / TIME		5min	10min	15min	30min	1h	2h	3h	4h	5h	8h	10h	20h
9.60V	A	720.00	440.00	350.00	230.00	120.00	70.00	52.00	42.00	35.08	23.17	22.00	11.40
	W	7632.00	4672.80	3745.00	2484.00	1308.00	763.00	572.00	462.00	385.92	257.15	244.20	128.25
10.20V	A	660.00	441.67	321.67	218.33	124.00	67.17	51.00	40.00	34.42	22.80	21.00	11.20
	W	7194.00	4902.50	3586.58	2456.25	1395.00	758.98	576.30	454.00	390.63	258.78	238.35	127.12
10.50V	A	612.08	422.00	300.00	211.67	120.00	65.83	50.00	38.00	34.00	22.50	20.60	11.06
	W	6732.92	4747.50	3390.00	2412.99	1368.00	753.79	572.50	437.00	391.00	258.75	236.90	127.19
10.80V	A	557.33	403.33	280.00	202.00	116.00	64.17	49.00	37.33	32.50	21.92	20.00	10.92
	W	6130.67	4598.00	3206.00	2333.10	1339.80	741.12	568.40	434.93	378.63	255.33	233.00	127.22
11.10V	A	482.00	380.00	260.00	188.00	110.00	62.50	47.00	36.67	31.08	21.33	19.50	10.80
	W	5446.60	4389.00	3016.00	2199.60	1287.00	731.25	552.25	432.67	366.78	251.73	230.10	127.44

Note: The above datas are average values. (Edition 2017-11)



6FM200/12Volt 200Ah

